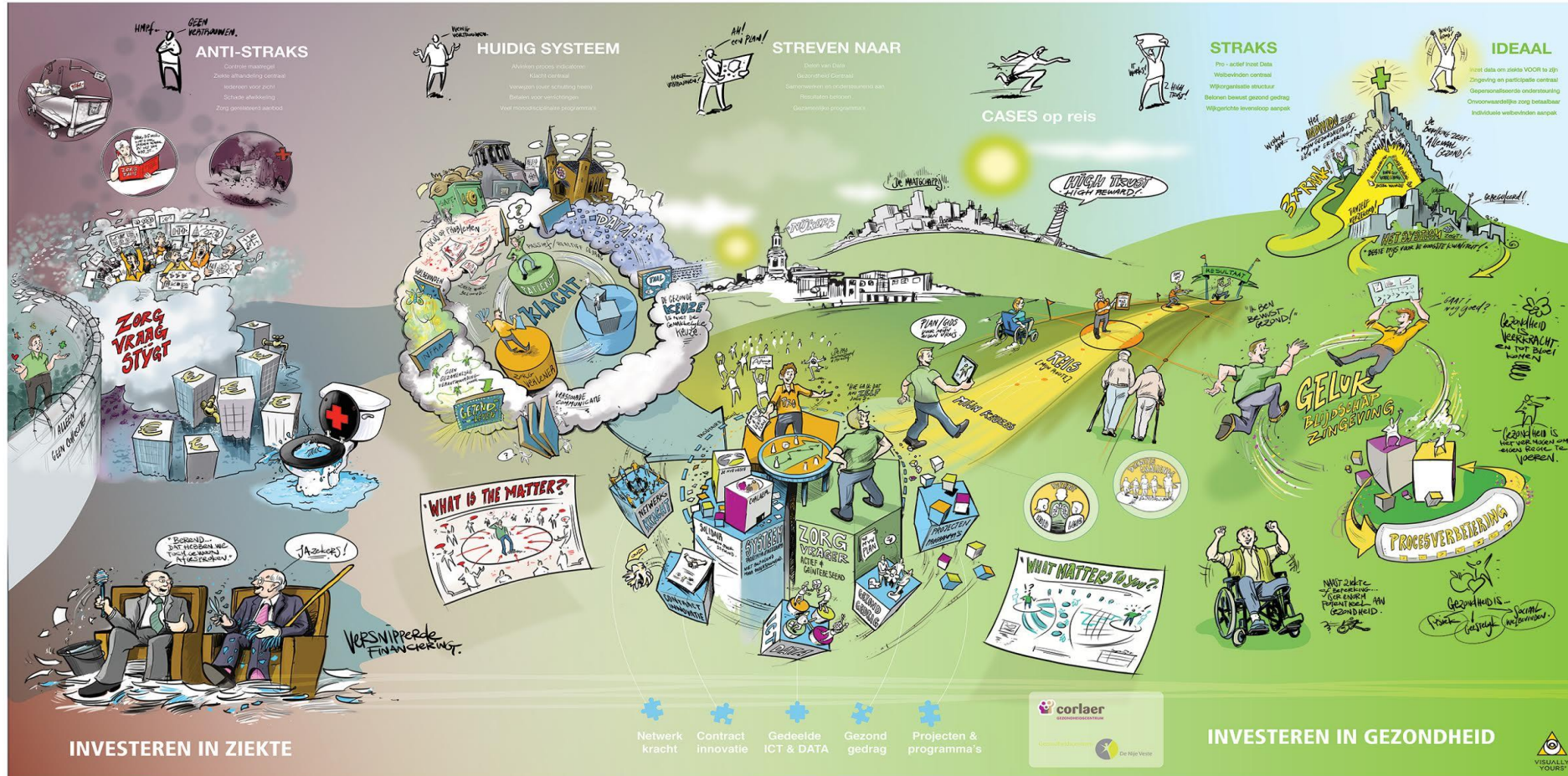


Bestuurders en *Positieve Gezondheid & Trusted Networks*

22 maart 2022 – Alliantie Positieve Gezondheid Zuid-Holland Noord

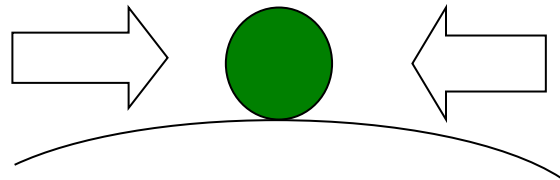
Dr. Machteld Huber

Van Ziekte en Zorg naar Gezond Gedrag

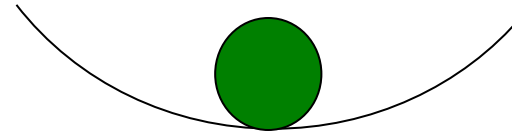


NAAR 'VEERKRACHTIGE SYSTEMEN' DOOR EEN ANDERE BENADERING:

Controle model
gangbare benadering



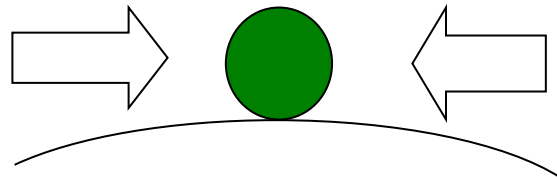
Adaptatie model
'veerkracht' benadering



(Ten Napel et al., 2006; WUR/LBI)

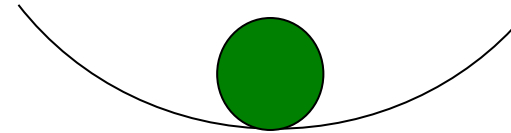
NAAR 'VEERKRACHTIGE SYSTEMEN' DOOR EEN ANDERE BENADERING:

Controle model
gangbare benadering



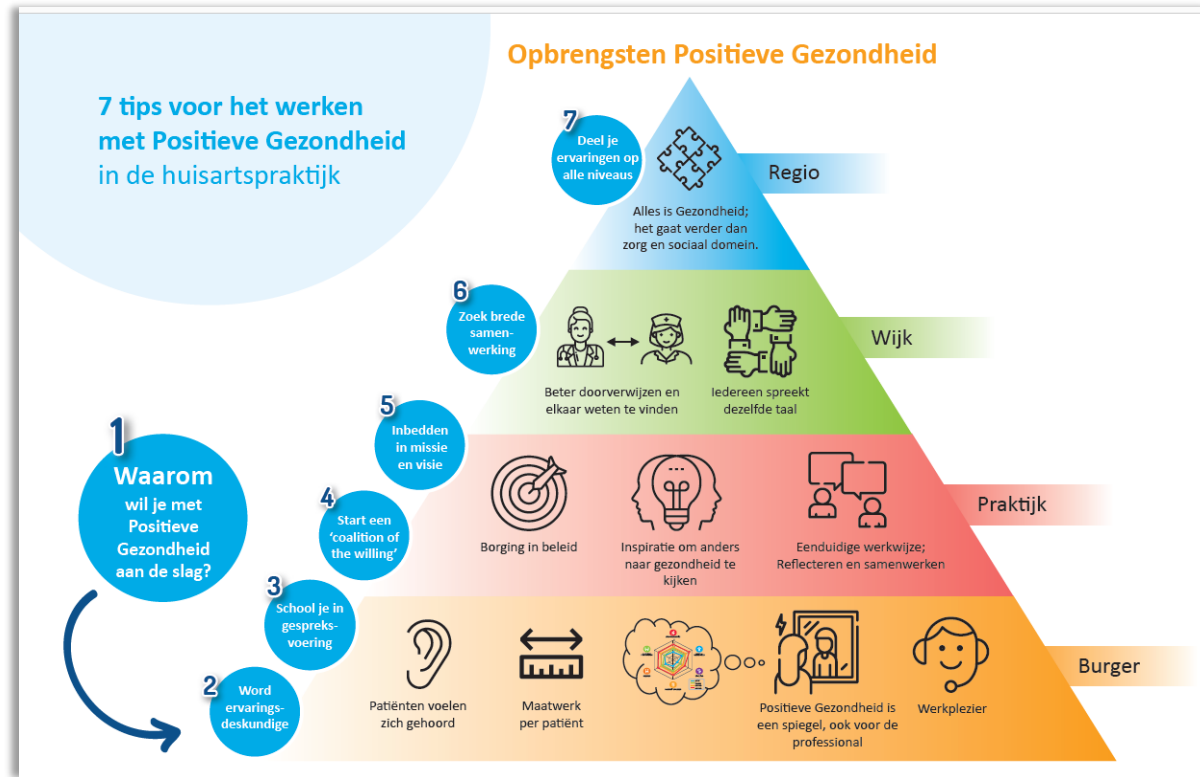
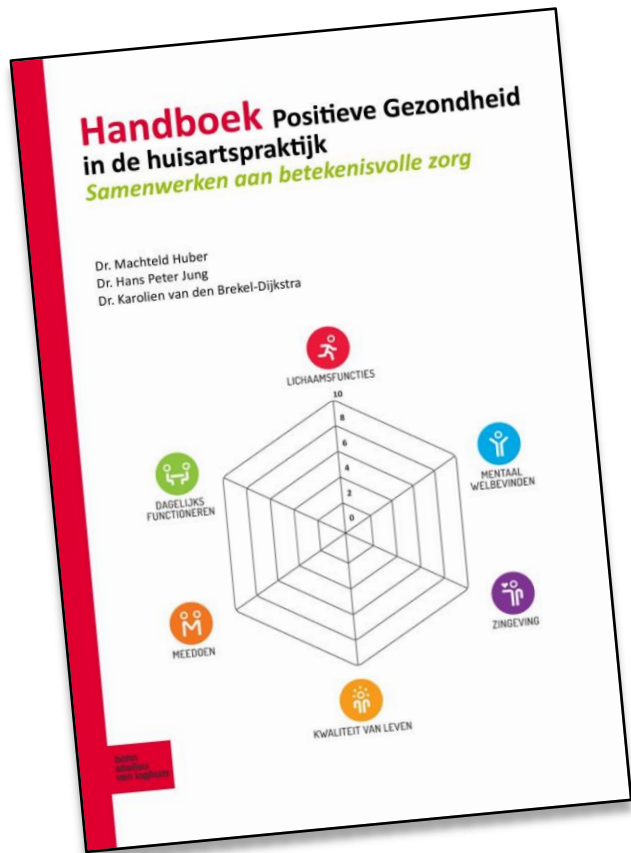
- Focus op probleem
- Variatie uitschakelen
- Continue monitoring
- Direct ingrijpen
- Statisch evenwicht

Adaptatie model
'veerkracht' benadering



- Focus op systeem
- Variatie benutten
- Zelfregulatie stimuleren
- Indirect sturen
- Dynamisch evenwicht

(Ten Napel et al., 2006; WUR/LBI)



A close-up photograph of two hands holding two interlocking wooden puzzle pieces. The puzzle pieces are light-colored wood with a natural grain. The background is a soft, out-of-focus green, suggesting an outdoor setting. The lighting is bright, creating a slight lens flare effect between the two puzzle pieces. The overall composition is centered and balanced.

Nederland

Positieve
Gezondheid

**Canada
Colombia**

Trusted Networks

Redefining
HEALTH

Nederland

Zingeving

**Canada
Colombia**

Vertrouwen

**Redefining
HEALTH**

Possibility: Co-creation as the driving force



What if we decided to align our interests to create health and well-being, together?

Do you pass the FUCK test?



Rivals can trust each other



Trusted networks:
The key to achieve world-class health outcomes
on a shoestring

Mauricio Serra • Diana Ospina Palacio • Sara Espinal • David G. Rodriguez • Alejandro (Alex) R. Jadad (Editor-in-Chief)

Editors:

PETER BENNEMEER

. De ingreep.

Hoe een buitenstaander
het ziekenhuis beter maakte

bernhoven

 streeklief
van Ighum

**Volg je hart,
gebruik je hoofd
en dóe er wat mee!**

Véél succes!